



215 years



WELCOME GUIDE



215 years

UNIVERSITY OF BELGRADE

CONTENTS

| | |
|--|----|
| Rector's Foreword | 5 |
| WHY CHOOSE THE UNIVERSITY OF BELGRADE | |
| Academic Excellence | 9 |
| University of Belgrade At a Glance | 10 |
| University Members | 12 |
| STUDYING AT THE UNIVERSITY OF BELGRADE | |
| Academic Information | 15 |
| Become a Student of the University of Belgrade | |
| · Full Degree Studies | 19 |
| · Mobility Opportunities for Incoming Students | 22 |
| Academic and Administrative Staff Mobility | 25 |
| Circle U. European University Alliance | 26 |
| MobiOn - UB Mobility Platform | 27 |
| LIVING AND STUDYING IN BELGRADE | |
| About Belgrade | 29 |
| Culture and Entertainment | 30 |
| Entering the Country and Temporary Stay Permit | 32 |
| Accommodation | 34 |
| Cost of Living | 36 |
| Cost of Studying | 38 |
| Erasmus Student Network | 39 |
| Serbian Language | 40 |



Welcome to the University of Belgrade – a diverse academic community, on a path to highest levels of academic excellence!

The University of Belgrade represents the most significant academic institution in our country and in the region and as such provides an especially productive environment for development, advancement and actualization of a long line of professional backgrounds encompassing the following: social sciences and humanities, medical sciences, sciences and mathematics and technology and engineering sciences.

With that in mind, further strengthening the reputation of the University of Belgrade will have its basis in attracting a larger number of students, improving and innovating study programs and reforming operational procedures in order to assert the University's position among top universities in the region and the world when it comes to the quality of teaching it provides and the professionals it educates. Special attention should be paid to the affirmation of scientific-research, as well as professional and artistic capacities of teaching and research staff, to the consideration of the principles of development defined within national strategies and legislative frameworks and reliance on the developmental goals and directions set within current agendas on the European level.

In order to further build on the principles of autonomy, independence and social engagement of the University,



215 years

UNIVERSITY OF BELGRADE



RECTOR'S FOREWORD



as well as affirm the highest standards of scientific-research and education for the purpose of reaching a high level of academic excellence, the future vision of the University of Belgrade should be grounded in the principles incorporated in the following system of values: academic freedom, acceptance of diversity, academic honesty, contemporary competences and transfer of knowledge, integrity, leadership and common well-being.

It is necessary for the University to continuously keep encouraging and defending academic independence, intellectual curiosity, freedom of expression, open-mindedness to the exchange of ideas and critical opinion. To this end, it is necessary to provide an ambiance in which there would be equal opportunities and equitable treatment of all those concerned, irrespective of their title, age, ethnicity or gender.

A special focus should be placed on nurturing and developing academic excellence in discovering, preservation and dissemination of theoretical and practical knowledge, development of cooperation, with other academic institutions, but also those outside the academia, but of importance for development of higher education. Promotion and development of ethical and responsible behavior and leadership, dedicated to the greater good, should enable further development of integrity, whereas solving ongoing problems among members of the University through constructive dialogue should contribute to greater cohesion within the University. Besides working on strengthening its own capacities, a special mission of the University in the coming period will be to intensify its activities towards economic development and a wider social community we belong to.

The vision of the University of Belgrade is to remain the leading educational and scientific-research institution in the region, respected abroad, an incubator of employment, an advisor to the economy and support to educational policy stakeholders at home.

Prof. Dr. Vladan Đokić
Rector
University of Belgrade



215 years



UNIVERSITY OF BELGRADE

WHY CHOOSE THE UNIVERSITY OF BELGRADE

ACADEMIC EXCELLENCE

Located at the confluence of the Sava and the Danube rivers and just a very short distance away from Athens, Rome, Vienna, Budapest, Ljubljana, Zagreb and Sarajevo, the geographical position of Belgrade is an excellent spot for young people to gain high-quality university education while living in a modern and dynamic European metropolis.

Geographical proximity to prestigious university centers of the neighboring countries has additionally motivated the University of Belgrade to strive for excellence in science and education, which has also been reflected in its constantly improving place at global ranking lists of the world's best universities.

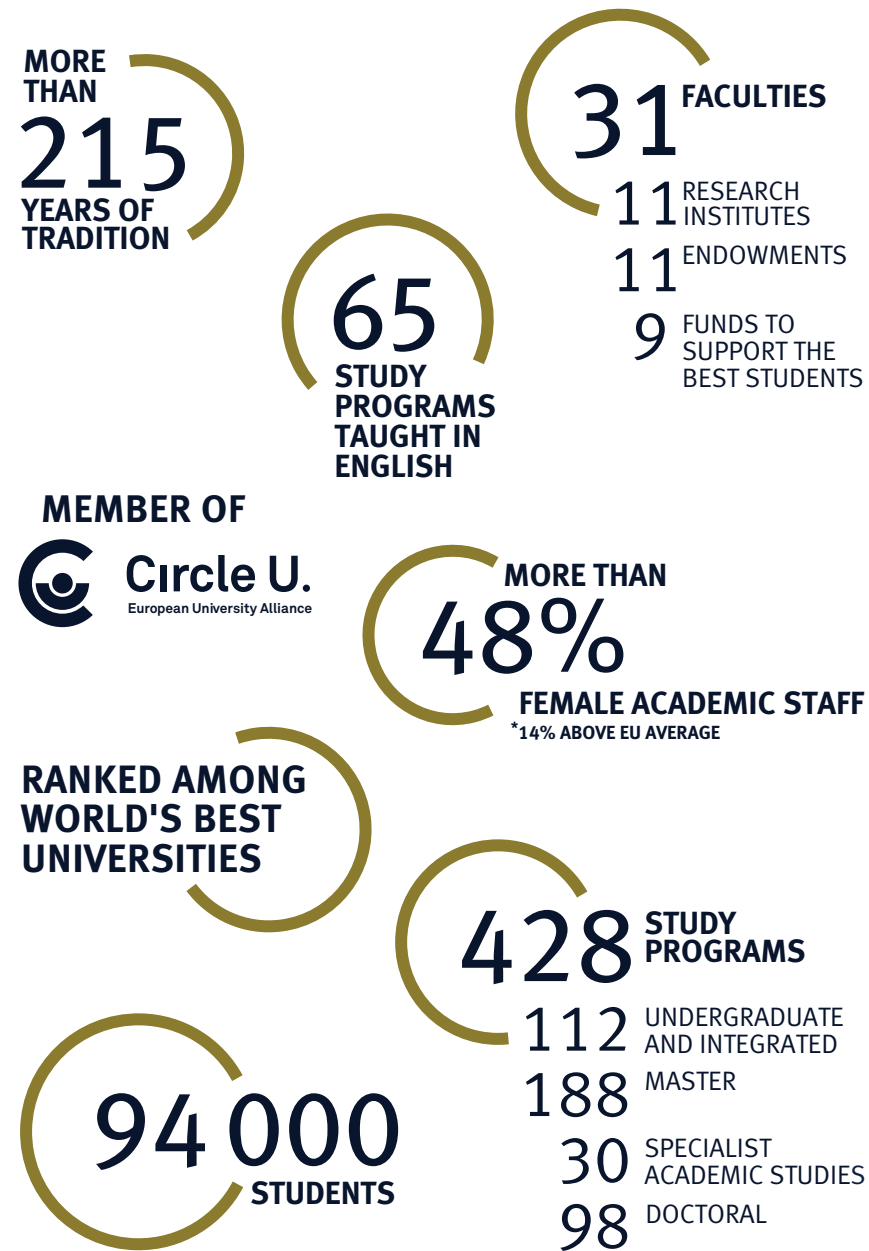
Since 2012, the University of Belgrade has held high placement at global academic ranking lists, including the possibly most prestigious global ranking list published by Academic Ranking of World Universities (ARWU), also known as Shanghai Ranking. Shanghai Ranking places the University of Belgrade among the three best-ranked universities from East and South-East Europe.

In Serbia, it stands out as the university that educates the highest number of professionals in a wide variety of fields of study, while its international success continuously strengthens its position as the leading higher education institution in the region.

All study programs have been harmonized with the principles of the Bologna Declaration, with the aim to make the University of Belgrade a part of the Common European Education Area with an emphasis on mobility of students and staff.

Foreign students can choose between two possibilities: they can choose from among the 65 study programs in the English language, or they can enroll in intensive Serbian language course at the UB - Faculty of Philology – Center for Serbian as a Foreign Language, and after they successfully complete it, they can choose any study program (from among 428 of them), offered at 31 different faculties of the University of Belgrade.

UNIVERSITY OF BELGRADE AT A GLANCE



FACULTIES AND INSTITUTES OF THE UNIVERSITY OF BELGRADE

SOCIAL SCIENCES AND HUMANITIES

Faculty of Economics | www.ekof.bg.ac.rs
 Faculty of Law | www.ius.bg.ac.rs
 Faculty of Orthodox Theology | www.bfspc.bg.ac.rs
 Teacher Education Faculty | www.uf.bg.ac.rs
 Faculty of Security Studies | www.fb.bg.ac.rs
 Faculty of Special Education and Rehabilitation | www.fasper.bg.ac.rs
 Faculty of Political Science | www.fpn.bg.ac.rs
 Faculty of Sport and Physical Education | www.fsfv.bg.ac.rs
 Faculty of Philosophy | www.f.bg.ac.rs
 Faculty of Philology | www.fil.bg.ac.rs

MEDICAL SCIENCES

Faculty of Medicine | www.mfub.bg.ac.rs
 Faculty of Dental Medicine | www.stomf.bg.ac.rs
 Faculty of Veterinary Medicine | www.vet.bg.ac.rs
 Faculty of Pharmacy | www.pharmacy.bg.ac.rs

ENGINEERING AND TECHNOLOGY

Faculty of Architecture | www.arh.bg.ac.rs
 Faculty of Civil Engineering | www.grf.bg.ac.rs
 School of Electrical Engineering | www.etf.bg.ac.rs
 Faculty of Mechanical Engineering | www.mas.bg.ac.rs
 Faculty of Agriculture | www.agrif.bg.ac.rs
 Faculty of Mining and Geology | www.rgf.bg.ac.rs
 Faculty of Transport and Traffic Engineering | www.sf.bg.ac.rs
 Technical Faculty in Bor | www.tf.bor.ac.rs
 Faculty of Technology and Metallurgy | www.tmf.bg.ac.rs
 Faculty of Organizational Sciences | www.fon.bg.ac.rs
 Faculty of Forestry | www.sfb.bg.ac.rs

SCIENCES AND MATHEMATICS

Faculty of Biology | www.bio.bg.ac.rs
 Faculty of Geography | www.gef.bg.ac.rs
 Faculty of Mathematics | www.matf.bg.ac.rs
 Faculty for Physical Chemistry | www.ffh.bg.ac.rs
 Faculty of Physics | www.ff.bg.ac.rs
 Faculty of Chemistry | www.chem.bg.ac.rs

INSTITUTES

Institute of Electrical Engineering “Nikola Tesla” | www.ieent.org
 Institute for Biological Research “Siniša Stanković” |
www.ibiss.bg.ac.rs
 Institute for Medical Research | www.imi.bg.ac.rs
 Institute of Molecular Genetics and Genetic Engineering |
www.imgge.bg.ac.rs
 Institute of Nuclear Sciences “Vinča” | www.vin.bg.ac.rs
 Institute for the Application of Nuclear Energy | www.inep.co.rs
 Institute of Physics | www.phy.bg.ac.rs
 Institute of Philosophy and Social Theory | www.instifdt.bg.ac.rs
 Institute of Chemistry, Technology and Metallurgy |
www.ihtm.bg.ac.rs
 Institute “Mihajlo Pupin” | www.imp.bg.ac.rs
 Institute for Multidisciplinary Research | www.imsi.rs

LIBRARY

Computer Centre www.rcub.bg.ac.rs
 University Library “Svetozar Marković” | www.unilib.bg.ac.rs



215 years

UNIVERSITY OF BELGRADE

STUDYING AT THE UNIVERSITY OF BELGRADE

ACADEMIC INFORMATION

ACADEMIC YEAR

The academic year consists of two semesters and exam terms that take place at the end of each semester.

Exam terms are organized in accordance with the annual plan of exams of each faculty/school of the University of Belgrade. Exam schedule is made at the beginning of each academic year.

GENERAL ACADEMIC CALENDAR

| STUDY TERM | START MONTH * | END MONTH * | EXAM PERIOD ** |
|-----------------|---------------|-------------|--------------------|
| Fall Semester | October | December | January - February |
| Summer Semester | March | May | June - September |

* Exact start/end dates may vary among specific UB faculties

GRADING SCALE

Students' success in the exams is reflected by grades from 5 (fail) to 10 (excellent). Student can achieve maximum of 100 points.

| GRADES | CLASSIFICATION | NUMBER OF POINTS | |
|--------|--------------------|------------------|-----|
| | | From | To |
| 10 | excellent | 91 | 100 |
| 9 | exceptionally good | 81 | 90 |
| 8 | very good | 71 | 80 |
| 7 | good | 61 | 70 |
| 6 | sufficient | 51 | 60 |
| 5 | fail | 0 | 50 |

General guidelines for the grade conversion from different foreign higher education systems to the HE grading system used in Serbia may be found at the "Study in Belgrade" online guide.

COURSES OFFERED TO VISITING STUDENTS

Depending on the type of mobility, visiting students may either choose courses from a specific study area, if so stipulated by the agreement, or may be eligible to take any course at the specific host faculty of the University of Belgrade that is open to its students, provided that they meet the mandatory enrollment requirements (necessary pre-knowledge, knowledge of the language of instruction, etc.).

The University of Belgrade does not guarantee that visiting students will be able to enroll in any specific course until the very time of registration, and we therefore encourage students to have a wide selection of courses ready at the time of registration, as well as to get in touch with the specific faculty of the University of Belgrade to seek for more information on the curriculum.

Visiting students may attend courses offered at one of the faculties of the University of Belgrade exclusively if previously nominated by their home university, followed with the official consent of the relevant authority of the UB faculty in question.

LANGUAGE OF INSTRUCTION

The official language of instruction is Serbian. However, there are numerous accredited curricula taught in English. Incoming students can either enroll in one of the English-taught study programs, or take an intensive Serbian language course and, after successfully completing it, enroll in any Serbian-taught program.

The minimum recommended level of language proficiency is B1 for incoming students and B2 for incoming staff, as defined by the Common European Framework of Reference for Languages. This may vary based on the specific requirements of each individual faculty/school or Institute of the University of Belgrade, which will be seen in the application form for a specific mobility model. We suggest that you upload a language certificate as one of the application documents.

STUDY IN BELGRADE ONLINE GUIDE

To learn about the nomination and enrollment procedures, and available courses and study programs, please take a look at the "Study in Belgrade" online guide





215 years

UNIVERSITY OF BELGRADE

BECOME A STUDENT OF THE UNIVERSITY OF BELGRADE

Foreign citizens become students at the University of Belgrade by:

- Enrolling in degree studies
- Taking part in exchange and mobility opportunities offered to visiting students

DEGREE STUDIES

Degree seeking international candidates who wish to become students of the University of Belgrade must first hold a valid certificate on previously completed cycle of education that proves the eligibility of a candidate to apply for undergraduate, master or doctoral studies at the University of Belgrade. If all other general and specific requirements are met, and upon successful enrollment (e.g. successfully passed entrance exam), a foreign citizen becomes student of the entire study cycle at the University of Belgrade.

At the first cycle of higher education studies at the University of Belgrade, prospective students can choose between academic and vocational studies; that is, between master and specialist studies at the second cycle, respectively.

At the third cycle of higher education studies, prospective students of the University of Belgrade can enroll in doctoral academic studies only. The University of Belgrade does not have vocational doctorates as a part of its academic offer.

Foreign students can also transfer from a higher education institution abroad to the University of Belgrade within the same cycle of education.

For each listed option, general enrollment requirements for foreign citizens are the same as for the citizens of the Republic of Serbia. The University of Belgrade announces the call for enrollment on its website (www.bg.ac.rs), usually in May each year. The call contains information on eligibility criteria for certain study level and other enrollment requirements for all candidates.

Foreign citizens pay tuition fees for non-nationals. Since the University of Belgrade has 31 faculties, please note that tuition fees, as well as specific criteria for enrollment, vary from one faculty to another, and must be looked up at the official website of the preferred faculty of the University of Belgrade (p.38).

SPECIFIC ENROLLMENT REQUIREMENTS

for foreign degree seeking candidates are as follows:

- to submit the proof that their previously completed education has been recognized by a competent authority of the Republic of Serbia*
- to submit a proof of health insurance for the academic year in question
- to be fluent in the Serbian language, or in the language of instruction at the chosen study program

*The procedure of recognizing high-school degrees is done by the Agency for Educational Qualifications of the Republic of Serbia, while higher education degrees are recognized by the University of Belgrade – Education and Research Office.

RECOGNITION OF FOREIGN HIGHER EDUCATION DOCUMENTS FOR THE PURPOSE OF FURTHER EDUCATION

In order to enroll in the University of Belgrade, evaluation of a foreign study program and recognition of foreign higher education documents are needed.

Evaluation of a foreign study program is the procedure of assessing the type and level of knowledge acquired and skills achieved in a study program, or a part of a study program, organized by a foreign higher education institution.

Recognition of foreign higher education documents for the purpose of further education is a procedure which, once completed, grants the applicant the right to continue their education at the University of Belgrade, at an accredited study program.

For detailed information on recognition procedures at the University of Belgrade please visit:

<https://bg.ac.rs/en/education/recognition.php>

RECOGNITION OF FOREIGN EDUCATION DOCUMENTS FOR THE PURPOSE OF ENROLLMENT IN THE 1ST STUDY CYCLE

For the purpose of enrollment in the first year of degree seeking undergraduate studies, candidates should

submit a request for the purpose of further education to the Agency for Educational Qualifications of the Republic of Serbia: <http://azk.gov.rs>

RECOGNITION OF FOREIGN HIGHER EDUCATION DOCUMENTS FOR THE PURPOSE OF FURTHER EDUCATION AND OF ENROLLMENT IN THE 2ND AND 3RD STUDY CYCLE

The procedure of recognition for the purpose of further education entails the evaluation of a foreign study program, or a part of a study program, and establishes the candidate's right to further continue the education at the same level of study or to enroll in an adequate study program at the next level. In-detail information on recognition and procedural requirements for the purpose of further education can be found at the official website of the University of Belgrade – Education and Research Office:

<http://bg.ac.rs/en/education/recognition.php>

FULL DEGREE SEEKING – SHORT SUMMARY

1. Find a preferred study program at the University of Belgrade (in Serbian or a foreign language)
2. Get in touch with the competent authority in order to have your previously acquired education diploma recognized and validated,
 - for high-school degrees:
<http://azk.gov.rs>
 - for higher education degrees:
<http://bg.ac.rs/en/education/recognition.php>
 - for a part of a study program at your former home institution:
<http://bg.ac.rs/en/education/recognition.php>
3. Check the call for enrollment at the website of the University of Belgrade (month of May), and make sure you meet: deadlines and general enrollment requirements and specific enrollment requirements for foreign citizens
4. Apply for admission at the specific faculty of the University of Belgrade that carries out your chosen study program and pass the entrance exam (if required)

MOBILITY (EXCHANGE) OPPORTUNITIES FOR VISITING STUDENTS

Student mobility or exchange implies attending a part of a study program (one or two semesters) at a foreign university. It can be organized at both undergraduate and (post)graduate levels.

Visiting students remain enrolled and receive a degree from their home university, with a supplement to confirm that they have spent a part of their studies at the University of Belgrade. All the exams that visiting students have successfully passed during their mobility at the University of Belgrade are stated in the transcript of records, issued by the University of Belgrade at the end of their mobility.

Exchange students can spend one or two semesters at the University of Belgrade. Certain exchange programs offer a possibility for short-term stays.

Important: Prospective exchange students should first get all the key information and requirements from their home university. Furthermore, specific requirements and procedures of different exchange types and programs must be carefully examined.

The University of Belgrade hosts international students and staff within the framework of several programs. For updated information on currently running offers and available options, please visit our online mobility platform at <https://mobion.bg.ac.rs>



ERASMUS+ PROGRAM

Within the current Erasmus+ program cycle (2021-2027), the University of Belgrade has established successful cooperation with more than 250 European universities, and with about 50 universities in the rest of the world.

Prospective incoming candidates should visit the university's online platform for internationalization and mobility: MobiON - <http://mobion.bg.ac.rs> for detailed information on partner universities, scholarships, open calls and nomination procedures, under the section Erasmus+: "Incoming Candidates".

Important: The relevant office of the partner university nominates and registers their candidates through the MobiOn platform. Applications and nominations received or sent in any other way will not be accepted.

CEEPUS PROGRAM

Central European Exchange Program for University Studies is an academic exchange program for students and professors from Central and Eastern Europe.

The scholarship includes a tuition fee waiver, accommodation, food and financial support. The amount of the support depends on the host country.

Foreign students apply for the program online, exclusively. Before applying, they should consult their National Coordinator for CEEPUS in their home country.

Member universities from the CEE and contact details can be found at the official website of the program: <http://ceepus.info>



BILATERAL AGREEMENTS OF COOPERATION

University of Belgrade maintains close and active cooperation with many European and world-wide universities through more than 250 bilateral agreements in force that offer foreign students and scholars an opportunity to study or do research and teach at the University of Belgrade. If you are interested in whether your university has a bilateral agreement with the University of Belgrade, please check the updated list at the webpage of the UB – International Relations Office or send us an email inquiry.

The nominations for this mobility type are sent directly from the IRO of the foreign university to the IRO of the University of Belgrade via email.

Students, who are currently enrolled in an undergraduate degree-seeking program at another university, should have completed at least one full year of studies by the time of application for exchange.

BILATERAL AGREEMENTS AND SCHOLARSHIPS OF THE GOVERNMENT OF THE REPUBLIC OF SERBIA

Each year, the mobility of many incoming international students and staff at the University of Belgrade is supported by the Government of the Republic of Serbia, based on international agreements signed between the Republic of Serbia and foreign countries.

Information on this type of open calls, deadlines and requirements is usually distributed by Serbian diplomatic missions and embassies abroad to competent authorities in their host countries (i.e. ministries of education, etc.). Therefore, we suggest you contact the Ministry of Education (or other competent institution) in your home country or the nearest diplomatic mission of the Republic of Serbia in your home country.

Websites and contact details of diplomatic-consular missions of the Republic of Serbia across the world can be found at the official website of the Serbian Ministry of Foreign Affairs: <http://www.mfa.gov.rs>



FREE MOVERS

You can study at the University of Belgrade for a maximum of one academic year without participating in a specific exchange/mobility program and even if your home university does not have an official exchange agreement with the University of Belgrade.

Free movers must be eligible and fulfill the necessary prerequisites for the study program they wish to attend at the University of Belgrade. They must also fulfill the language requirements of the chosen study program. Their home university must officially confirm that their planned mobility stay at the University of Belgrade will be accepted as an official part of their degree program.

Free movers must sign a mobility agreement and learning agreement; this type of mobility does not lead to obtaining a degree from the University of Belgrade, only the transcript of records listing all successfully passed exams.

Free movers are strongly recommended to contact their home university's competent office and the specific faculty of the University of Belgrade they wish to attend, to get information on tuition fees and specific requirements for this type of mobility.

OPPORTUNITIES FOR ACADEMIC AND ADMINISTRATIVE STAFF

Similar to students, teaching and administrative staff can also take part in mobility programs. The main difference from student exchange is the duration of mobility, which mostly lasts from 2 days up to two months, depending on the type of the chosen mobility.

The reasons for mobility can be numerous, but the most common ones are work on joint projects, improvement of teaching through the exchange of experience and good practice, holding lectures, enhancing cooperation, learning from good practice, etc.

Teaching and administrative staff can take part in exchange on the grounds of bilateral cooperation agreements or projects which foster student and staff mobility, such as Erasmus+ and CEEPUS, or even come as freemovers.

For specific information on each option, please take a look at the information on the nomination procedure for foreign students and staff (p. 19), or visit the "Study in Belgrade" online guide.

CIRCLE U. - EUROPEAN UNIVERSITY ALLIANCE

If you are studying or working at one of the following universities:

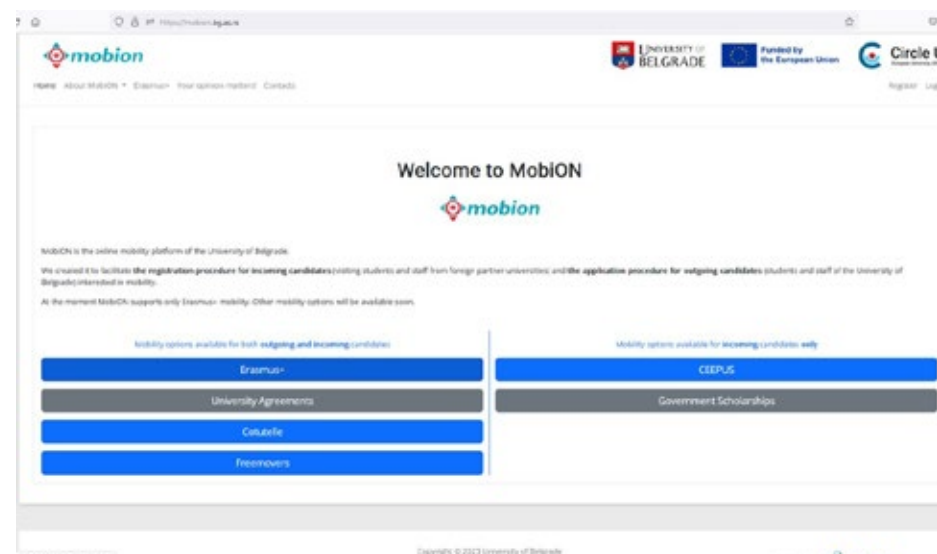
Aarhus University, Denmark
Humboldt-Universität zu Berlin, Germany
King's College London, United Kingdom
Université de Paris, France
University of Louvain, Belgium
University of Oslo, Norway
University of Vienna, Austria
University of Pisa, Italy

we invite you to apply for student or staff (teaching, research and administrative) mobility at the University of Belgrade within the Circle U. University Alliance, mostly funded through Erasmus+ program.

Comprised of universities from nine European countries, the Circle U. is a European University Alliance committed to building an inclusive, research-intensive and interdisciplinary European university by 2025, where students and staff feel at home wherever they venture and partners from academia, civil society, businesses and the public sector collaborate to jointly develop competencies and address global challenges.

Born out of the idea that culture and knowledge bind the European Union together and that multilingualism is an advantage in the Europe of today, the time was ripe to start creating a network of universities across Europe, thus formulating the idea of the European Universities Initiative. The main objectives of the European University Initiative were to promote common European values, strengthen European identity and ensure that European universities remain internationally competitive and attractive to students.

With the above as a guide, Circle U. will give a framework for increased student-centered cooperation, committed to widening participation and inclusion. We aim to make it easier and more attractive to go on an academic exchange and experience studying and working in at least two European languages, thus



creating new opportunities for cooperation and laying the foundation for stronger academic collaboration. In the coming years, Circle U. will act as a developer and testing ground for new concepts in higher education and research cooperation, in line with the continuous reskilling and lifelong learning agenda.

Please visit the Circle U. website for more information about the Alliance and to follow all current developments within the project at: <http://www.circle-u.eu>

MOBION - ONLINE MOBILITY PLATFORM OF THE UNIVERSITY OF BELGRADE

MobiON is the online mobility platform of the University of Belgrade.

We created it to facilitate **the registration procedure for incoming candidates** (visiting students and staff from foreign partner universities) and **the application procedure for outgoing candidates** (students and staff of the University of Belgrade) interested in mobility: <http://mobion.bg.ac.rs>



215 years


 UNIVERSITY OF BELGRADE

LIVING AND STUDYING IN BELGRADE

ABOUT BELGRADE

Belgrade is an exceptionally vibrant and outspoken city. Its history dates back to the 6th millennium BC, when the Vinča Culture, one of the most important prehistoric cultures of Europe, evolved with its epicenter within Belgrade's area.

Many cultures and tribes left their mark in its long and turbulent history: Thraco-Dacians, Celts, Romans, Byzantines, Slavs, Ottomans, Austro-Hungarians, have all shaped today's capital of Serbia into one of the most diverse and interesting cities of South-East Europe. Even the first Buddhist temple in Europe was built in Belgrade!

A walk through the city's center would bring quick shifts of architectural and emotional settings – from a monumental medieval fortress or a 16th century Ottoman mosque, through elegant Habsburg buildings and the Sveti Sava temple – one of the largest Eastern Orthodox Churches in the world, to the Palace of Serbia - the monumental example of the 20th century Yugoslav modernism, or shiny contemporary business buildings. An instant cross-culture and time-travel experience.

With its population of 1,23 million in the urban area, Belgrade is the capital of Serbia and the largest city in the Western Balkans. It is located at the confluence of the Sava and the Danube rivers, at the very border of the Pannonian Plain and the Balkans – the city's favorite spot for watching stunning sunsets.

Recent years have seen a significant increase in Belgrade's expat community, ranging from students to business and industry professionals, making much of the city's content inclusive for English-speaking visitors with various cultural backgrounds.

In many ways Belgrade appeals mostly to young people who easily become an integral part of its vibrant pace and atmosphere.

We invite you to make the journey through Belgrade's unique magic the time of your life and to gain invaluable life and academic experience at the University of Belgrade.

CULTURE AND ENTERTAINMENT

Belgrade is probably best known for its vibrant nightlife. From traditional music and cuisine in the bohemian street of Skadarlija, to partying until the sun comes up at one of the many river-boat clubs and bars – the famous splavovi – or indoor clubs with local and international DJs or live performances, the city will offer an unforgettable experience even to the most demanding clubbers. Besides that, Belgrade will surprise you with numerous concerts, festivals and cultural events throughout the year.

Some of the best-known local festivals and events are BITEF (Belgrade International Theater Festival), BELEF (Belgrade Summer Festival – takes place at various locations and includes concerts and theater plays and performances), October Salon (international festival of visual and applied contemporary art), Museum Night (famous international event that takes place in over 120 cities worldwide), Devgt (contemporary art festival with numerous exhibitions, performances and concerts, held in summer in an old brickwork factory), Mikser Festival (regional festival of creativity and innovation), Belgrade Dance Festival (annual contemporary dance festival), Belgrade Marathon (that also features half marathon and fun run for the public).

Numerous music and film festivals in Belgrade offer high quality programs throughout the year. Here are some traditional ones you can start with: BEMUS (the oldest classical music festival in Serbia), Belgrade Jazz Festival (annual representation of finest local and international jazz artists), Belgrade Beer Fest (wide range of foreign and domestic beer brands and a lineup of numerous famous international and local performers).

For many Belgradians the end of each winter is pre-booked for the city's favorite film festival – the FEST. Starting from low budget films from across the world to spectacular blockbusters – visitors enjoy high quality selection of the best new releases, accompanied by an additional program segment featuring all time films of previous decades. Other popular film festivals in Belgrade include BELDOCS (international documentary

film festival), Auteur Film Festival (annual festival of authors' films, intended for broader audiences), Underwater Film Festival (international films and photographs from underwater world), Nitrate Film Festival (ranked in the top three archival festivals in the world, and hosted by the world-famous Yugoslav Film Archive), and many others.

Variety of galleries and museums will introduce you to Serbian contemporary and traditional art and heritage: Nikola Tesla Museum, Zepter Museum, National Museum, Museum of Applied Art, Belgrade City Museum, The Auto Museum, Ethnographic Museum Historical Museum of Serbia, Museum of Yugoslav Film Archive, Gallery of Frescoes, Museum of Yugoslav History, etc.

Once in Belgrade, you can take some time to travel around Serbia and explore other cities. To name but a few must-visit events outside of Belgrade: globally acclaimed, award-winning music festival EXIT held within the walls of the Petrovaradin Fortress in the city of Novi Sad; international jazz festival NIŠVILLE held within the Ancient Fortress of the city of Niš in southeast Serbia, or GUČA – the largest trumpet festival in the world with domestic and international brass bands held annually in the small town of Guča in western Serbia.



ENTERING THE COUNTRY AND TEMPORARY STAY PERMIT

Foreign citizens are required to register their address of residence in Serbia with the local police station within 24 hours of their arrival.

A hotel, hostel or student dormitory will automatically complete it on your behalf. If you are staying in private housing, you should visit the police station with your landlord in order to register your residence. Erasmus Student Network (ESN) can help incoming students with this procedure.

All information on regulations and procedures regarding visas and the authorization of temporary stay of foreigners in Serbia, the general list of required documents, as well as specific documents required for obtaining the authorization of temporary stay for academic purposes, are all available online on the website of the Ministry of Interior of the Republic of Serbia: <http://www.mup.gov.rs/wps/portal/en/information>

ENTRY VISA

There are many holders of foreign passports who do not need an entry visa to Serbia. However, to make sure whether you require an entry visa to Serbia, it is necessary to contact the nearest diplomatic consular mission of the Republic of Serbia in your country of residence.

Even though nationals of some countries (not everyone) may enter the Republic of Serbia with their ID cards only, international students and staff are required to have with themselves their valid passports to be able to obtain mandatory authorization of temporary stay, and therefore you are strongly recommended to use it when entering the country as well.

Visa applications should be submitted to the Embassy or Consulate General of the Republic of Serbia abroad. If you have any questions or concerns regarding entering the RS or your temporary stay as student/staff, we strongly recommend you contact the nearest diplomatic-consular mission of the Republic of Serbia for help.

**TO MAKE SURE
WHETHER YOU
REQUIRE AN
ENTRY VISA TO
SERBIA, CONTACT
THE NEAREST
DIPLOMATIC
CONSULAR
MISSION OF THE
REPUBLIC OF
SERBIA IN YOUR
COUNTRY OF
RESIDENCE.**

TEMPORARY STAY

As an academic exchange visitor, you will need to obtain your authorization of temporary stay (residence permit) for legal stay in the Republic of Serbia during your mobility. For all stays of 90 days or more, the authorization of temporary stay is mandatory, unless you entered the country on the D-type (student) visa.



HEALTH AND SAFETY

Even though it has been determined that COVID-19 no longer constitutes a public health emergency of international concern, with safety in mind, all incoming mobility participants should check the travel advisory issued by the Ministry of Foreign Affairs of the Republic of Serbia and relevant health and safety entry requirements published at: <http://www.mfa.gov.rs/en/citizens/travel-serbia> before making their trip.

ACCOMMODATION

The two most common types of accommodation used by foreign students and visitors to the University of Belgrade are renting a room at the Students' Centre Belgrade (student dormitory or one of their two hostels), or renting private accommodation.

STUDENTS' CENTRE BELGRADE

Student dormitories in Belgrade are run and managed by the Students' Centre Belgrade (<http://www.sc.rs>). Within their offer they also have two hostels available for individuals or groups.

IMPORTANT: Students' Centre Belgrade is an independent institution. Therefore, accommodation in all of their facilities is independently arranged by visitors themselves, directly with the management of the dormitory and the hostels.

STUDENT DORMITORY "RIFAT BURDZEVIC"

Student Dormitory was built in 1948. One part of the capacity is designated for accommodating foreign students. Owing to international exchange of students which functions on the principles of reciprocity, each year this hall is occupied by students mostly from Western Europe, Asia and North America. All rooms for foreign students are of the 1st category, with the characteristics of a small apartment. This hall of residence can accommodate 367 students in single, double and triple bedrooms of the 2nd category.

IMPORTANT: Under few specific types of cooperation, the University of Belgrade is able to offer complimentary accommodation in the Student Dormitory "Rifat Burdžević", with the support of the Ministry of Education of the Republic of Serbia and of the Students' Centre Belgrade. The free-of-charge accommodation can be provided for incoming exchange students on the basis of an Agreement of Cooperation between the student's home institution and the University of Belgrade following the principle of reciprocity.

HOSTELS

HOSTEL "KOD VUKA"

Available for foreign professors and lecturers, participants of international science and research projects, seminars, conferences etc.

HOSTEL „STUDENSKI GRAD“ – FOR STUDENT MOBILITY

Situated at Student town in New Belgrade, this hostel offers accommodation in completely renovated and modern-equipped rooms with 39 beds. It is opened during the whole year and it is suitable for both individual and group visits. The Hostel offers accommodation in single, double and three bedded rooms with a private bathroom and tea kitchen.

RENTED ACCOMMODATION

Visitors can rent their own accommodation. The University of Belgrade does not mediate in renting private accommodation, but there are numerous online resources for finding accommodation. Also, you may wish to contact the Erasmus Students Network Belgrade (<http://belupgrade.esn.rs>) and ask for their help in finding suitable accommodation. They can also help you get in touch with peers from all over the world, so you can consider sharing accommodation.



COST OF LIVING

Please note that all costs listed in here are **only estimates** and are intended to help international visitors plan their financial resources.

We estimate that students and visitors need an average of €600-800 per month per person to cover their accommodation costs, health insurance, costs of utilities, meals, city transportation, some necessary personal expenses and incidentals. Actual expenditures can significantly vary depending on individual spending habits, and, of course, whether one plans to live alone or with flat mates. Instruction materials and textbooks are not included, as each faculty of the University of Belgrade has its own required literature, and the prices therefore vary. Please see more under the “Cost of studying” section of this booklet.

ACCOMMODATION AND UTILITIES

Prices of housing in a **student dormitory** for foreign citizens vary depending on the number of persons sharing the room. Approximately, a single-bed room per person per day costs €27; a double-bed room per person per day costs €18, while a triple-bed room per person per day costs €14. Each room has a bathroom and a basic kitchenette. All utilities included. Additionally, a local tax per day costs around €1.5. Check the accommodation availability at info@sc.rs

Rented accommodation: Again, prices depend on the size, location and condition of the rented flat. However, an approximate price of a shared flat (e.g. 2 people) in the larger urban zone would be €350-400 + utilities (€120-180).

There are many **hostels** in Belgrade offering accommodation to foreign visitors at budget prices. This type of accommodation is usually preferred for short-term stays. Visitors who chose this type of accommodation for long-term stays should discuss the availability and possible discounts directly with the chosen hostel.

WE ESTIMATE THAT STUDENTS AND VISITORS NEED €600-800 TO COVER MONTHLY COSTS, DEPENDING ON SPENDING HABITS.

PUBLIC TRANSPORTATION IN BELGRADE

For information about public transportation in Belgrade, please visit:

<http://belgradecard.rs/public-transportation/>

PERSONAL INCIDENTALS

Personal care products, laundry and house cleaning products, and other: €50

HEALTH INSURANCE

Monthly health insurance for foreign students: €66

National Health Insurance Fund:

<http://www.eng.rfzo.rs>

IMPORTANT: Health insurance for foreign students and scholars is mandatory. However, candidates should check whether the health insurance has been provided according to the specific type of cooperation under which the mobility is arranged.

UB accepts insurance provided to incoming mobility candidates by their home institutions.



COST OF STUDYING

The cost of studying depends on the specific status a foreign student has at the University of Belgrade.

Holders of the scholarship of the Government of the Republic of Serbia do not pay tuition fees, they are granted free accommodation, free health insurance, as well as discount prices in the student cafeteria.

In cases of most bilateral agreements, as well as some international mobility programs (e.g., Erasmus+, CEEPUS), there is also a tuition fee waiver for incoming exchange students. Students, who independently enroll at the University of Belgrade, have to pay for the following (unless otherwise agreed and/or provided by the foreign visitor's status):

TUITION FEES

The University of Belgrade has 31 Member Faculty, organized into 4 groups: social sciences and humanities, medical sciences, sciences and mathematics and technology and engineering sciences. Criteria for enrollment, as well as tuition fees, vary from one faculty to another. In-detail information on the recognition of foreign higher education documents preceding the actual enrollment procedure can be found at

<http://www.bg.ac.rs/en/education/recognition.php>

Tuition fees for foreign students can be found at <http://bg.ac.rs/en/students/tuition-fees.php> and on the websites of the respective faculties - members of the University of Belgrade at <http://www.bg.ac.rs/en/members/faculties/faculties.php>

TEXTBOOKS AND INSTRUCTION MATERIALS

The type and the volume of required literature varies significantly, and therefore it would be best to contact the faculty of interest and check the prices of literature per each year. However, our approximate estimate is between €100-300 per student per year (depending on the Faculty and the study level).



ERASMUS STUDENT NETWORK

ESN BelUPgrade is our devoted and reliable partner in supporting and helping foreign and exchange students in Belgrade. The ESN can help you in organizing your stay in Belgrade, finding accommodation, international roommates and getting around.

Official Website: <http://esn.rs>

Address: Masarikova 5, Beogradjanka, 6th Floor

E-mail: office.belupgrade@esn.rs

Twitter: ESN BelUPgrade @ESN_BelUPgrade

Facebook: www.facebook.com/ESNBelUPgrade

Erasmus Student Network (ESN) is the biggest student association in Europe. It was born on the 16th October 1989 and legally registered in 1990 for supporting and developing student exchange. ESN is present in more than 800 Higher Education Institutions from 39 countries.

The network is constantly developing and expanding on three levels: local, national, and international. It has around 15,000 active members that are in many sections supported by so called buddies mainly taking care of international students. Thus, ESN involves around 34,000 young people offering its services to around 200,000 international students every year. ESN works for the creation of a more mobile and flexible education environment by supporting and developing the student exchange from different levels, and providing an intercultural experience also to those students who cannot access a period abroad ("internationalisation at home").

The story of ESN Serbia began in 2006 with the founding of the first section, ESN Belgrade. Although the city of Belgrade created an ESN section in 2006, the section was revived and officially registered in 2013 under an empowering name symbolizing growth and development – ESN BelUPgrade. A few brave individuals who shared common goals were united in their willingness to make this section strong and recognizable.

Today, ESN BelUPgrade has 50 members who do their best to help exchange students as well as to promote mobility and to show traditional Serbian hospitality. Besides its section in Belgrade, ESN Serbia includes sections in Novi Sad and Niš.

SERBIAN LANGUAGE

If you wonder what Serbian is like, you should know that it belongs to South Slavic group of Indo-European languages, having many fascinating grammatical categories. It is one of the very few standardized languages in the world that uses complete synchronic digraphia, equally using two alphabets – Cyrillic and Latin. The Serbian Cyrillic alphabet was created in 1814 by Serbian linguist Vuk Stefanović Karadžić, on purely phonemic principles.

On the Internet, you can find various websites and online resources for learning Serbian, or just for picking up its main phrases. However, if you are interested in it and wish to ensure you learn it well, we recommend the **UB Center for Serbian as a Foreign Language** located at the Faculty of Philology.

THE CENTER FOR SERBIAN AS A FOREIGN LANGUAGE

The Center for Serbian as a Foreign Language at the Faculty of Philology, University of Belgrade, has been offering intensive courses in the Serbian language for international learners since 1986.

Apart from a regular academic-year-long intensive course, the Center also offers an intensive three-week summer course. In these courses groups of learners are divided into three levels – beginner, intermediate, and advanced. Lecturers are our acknowledged teachers, native speakers of the Serbian language, who graduated from the Faculty of Philology. The Center for Serbian as a Foreign Language is also an examination Center – three times a year (January, June, and August/September) you can take an exam and get a certificate in Serbian as a foreign language, on one of all six CEFR levels.

<http://www.learnserbian.fil.bg.ac.rs>
<http://www.facebook.com/srpskikaostrani>

Belgrade University, Faculty of Philology
 Center for Serbian as a Foreign Language
 Studentski trg 3, 11000 Beograd
 E: learnserbian@fil.bg.ac.rs

Welcome!

BASIC PHRASES IN SERBIAN LANGUAGE

| English | Serbian |
|------------------------------------|--------------------------|
| Yes. | Da. |
| No. | Ne. |
| Please. | Molim. |
| I am sorry! | Izvinite! |
| Thank you! | Hvala! |
| Thank you very much! | Hvala lepo! |
| Here you are (polite). | Izvolite. |
| Here you are. | Izvoli. |
| Good morning. | Dobro jutro. |
| Good afternoon. | Dobar dan. |
| Good evening. | Dobro veče. |
| Good night. | Laku noć. |
| Hello! | Zdravo! |
| Goodbye. | Dovidenja. |
| Bye. | Zbogom. |
| What is your name? | Kako se zovete? |
| My name is... | Zovem se... |
| How are you? (polite) | Kako ste? |
| How are you? | Kako si? |
| Fine thanks, and you? | Dobro hvala, a vi/ti? |
| I understand (Serbian). | Razumem (srpski). |
| I don't understand (Serbian). | Ne razumem (srpski). |
| Do you speak English? | Govorite li engleski? |
| I speak (a little bit) of Serbian. | Govorim (pomalo) srpski. |
| How much does it cost? | Koliko košta? |
| Where is ...? | Gde se nalazi...? |
| I need a doctor. | Potreban mi je doktor. |
| Cheers! | Živeli! |
| Here is my phone number. | Ovo je moj broj. |
| I love you | Volim te |



МИША АНАСТАСИЕВИЧЪ СВОЕЪ ОТЕЧЕСТВУ

Publisher: University of Belgrade

Editorial Board:

Vladan Đokić, Rector

Branka Janda-Marković, Head of the International Relations Office

Ljubica Dimitrijević, Deputy Head of the International Relations Office

Jovana Ilić, International Relations Advisor

Nikola Savić, Marketing & International Relations

Executive Editor:

Jovana Ilić, International Relations Advisor

Proofreading:

Ljubica Dimitrijević, Deputy Head of the International Relations Office

Design and Layout:

Nevena Stanimirović

Photo Credits:

Stanoje Radulović, except:

Alexander Mills (p. 31)

ConvertKit (p. 33)

Belgrade Card (p.37)

Aleksandra Đorđević (p.42-43)

Year: 2023



УНИВЕРЗИТЕТ У БЕОГРАДУ
UNIVERSITY OF BELGRADE

This publication can be found online at www.bg.ac.rs/welcomeguide.pdf



Co-funded by
the European Union